

# PROMICAM LITE 10

10 MP Color CMOS USB 3.0 Cost Effective  
Digital Camera for Microscopy Documentation



Sensor Specifications	
Sensor Type	Aptina CMOS, rolling shutter, color
Sensor Size	1/2.3" (6.44 x 4.62 mm)
Sensor Aspect Ratio	7:5
Pixel Size	1.67 x 1.67 $\mu$ m
Resolution	3872 x 2764 pixels (10 MP)
Supported Software	
Software	QuickPHOTO in version 3.0 or higher (not included)
Camera Specification (when used with QuickPHOTO programs)	
Image Resolution	3872 x 2764, 1920 x 1080, 1936 x 1380, 968 x 690 pixels
Live View Resolution@Max. Frame Rate (fps)	3872 x 2764@7 fps 1920 x 1080 (Full HD - ROI)@31 fps 1936 x 1380 (binning)@25 fps 968 x 690 (binning)@25 fps
Lower Resolutions	Binning 2x2, Binning 4x4, ROI
Exposure Times	1/10000 s (100 $\mu$ s) – 30 s
Gain	1 – 19.5x
Exposure Mode	Automatic, automatic-interactive, fluorescence (SFL Auto), manual
White Balance	Automatic, automatic-regional, manual
Black Balance	Automatic-regional, manual
Camera Characteristics	
Dynamic Range	65.2 dB
Quantum Efficiency (green color 525 nm)	29 %
Max. Signal to Noise Ratio	34 dB
Interface	USB 3.0 / USB 3.1 Gen 1 (backwards compatible with USB 2.0)
Mount	C-mount / CS-mount
Dimensions	36 x 36 x 25 mm
Weight	70 g
Tripod Mount	1/4" - 20
Recommended Microscope Coupler	0.5x C-mount
Minimal System Requirements	
Processor	Single-core 2.4 GHz
RAM	1 GB
USB port	1x USB 2.0
Operating System	Microsoft® Windows® XP/Vista®/7/8/8.1/10 (32bit or 64bit)
Recommended Computer Configuration	
Processor	Multi-core processor
RAM	2-4 GB
USB port	1x USB 3.0
Operating System	Microsoft® Windows® 7/8.1/10 (64bit)

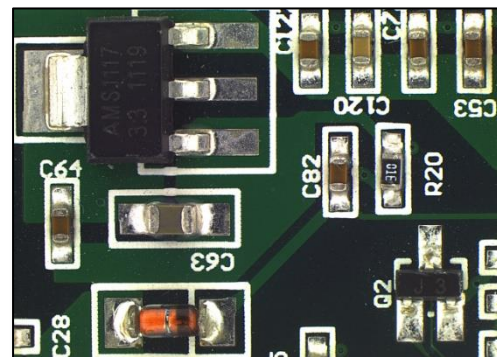
## Main Features:

- 1/2.3" CMOS color sensor
- 10 MP sensor resolution
- Live view frame rates up to 31 fps
- USB 3.0 /USB 3.1 Gen 1 interface backwards compatible with USB 2.0
- Small dimensions and low weight
- Screw lock USB connector
- Supported by QuickPHOTO programs

## Suitable for Applications:

- Brightfield/Darkfield
- DIC
- Biology/Live Cell Imaging
- Histology/Pathology/Cytology
- Metrology/Mineralogy/  
Metallurgy/Geology
- Quality control/ Semiconductor Inspection
- Documentation and Archiving
- Education

## Sample Image:



PROMICRA