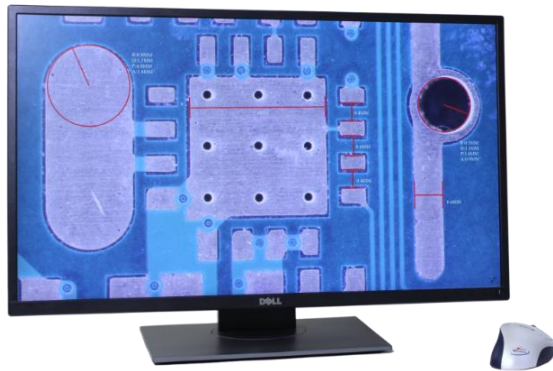


PROMICAM HDMI 4K

4K COLOR CMOS HDMI CAMERA WITH INTEGRATED MEASURING FEATURES, WHICH DOES NOT REQUIRE USE OF A COMPUTER



Features:

- SONY® STARVIS CMOS sensor with 1/1.2" diagonal
- Rolling shutter with global reset
- 8 MP sensor resolution (3840 x 2160 pixels)
- Pixel size 2.9 μm x 2.9 μm
- Live view in 4K or Full HD resolution depending on the type of monitor connected
- Very good color reproduction
- HDR feature also in live view
- Live image frame rate up to 30 frames per second in 4K resolution
- Direct connection to monitor, TV or projector via HDMI cable
- Capture, measure, view and compare images directly on the connected monitor
- Side-by-side comparison of two stored images or a snapshot and a live image from the camera
- Can be connected to any type of microscope with C-mount photo output
- Optional 12" monitor mounted directly on the camera

Suitable for Applications:

- Brightfield/Darkfield
- DIC
- Biology/Live Cell Imaging
- Histology/Pathology/Cytology
- Metrology/Mineralogy/Metallurgy/Geology
- Quality control/Testing
- Documentation and Archiving
- Education

Capture, Measure and View Images without Using a Computer

The PROMICAM HDMI 4K PRO camera does not require the use of a computer. Simply connect the camera via HDMI cable to a monitor, TV or projector and connect a mouse directly to the camera. Starting the camera takes only a few seconds. All functions of capturing, measuring, and viewing the captured images can be controlled with the mouse on the connected monitor. Images are stored on a flash drive.

High-resolution, High-quality Images

The PROMICAM HDMI 4K camera offers a live image with up to 4K resolution, high frame rate of the live image (up to 30 frames per second in 4K resolution), good sensitivity and high image quality with 8 MP resolution.

Measurement Features

The camera can be calibrated using a calibration scale and measure dimensions, perimeters, areas, angles without using a computer. Text labels can be added to the images. Measured values can be exported to a file compatible with MS Excel.



Screenshots of the Control Software Built into the Camera:

